



SOLEMATES

# CONTENTS

Meet Your Solemate 03

Interior 04

Exterior 16

Quality 24

Deck Plans 26

Specifications 27

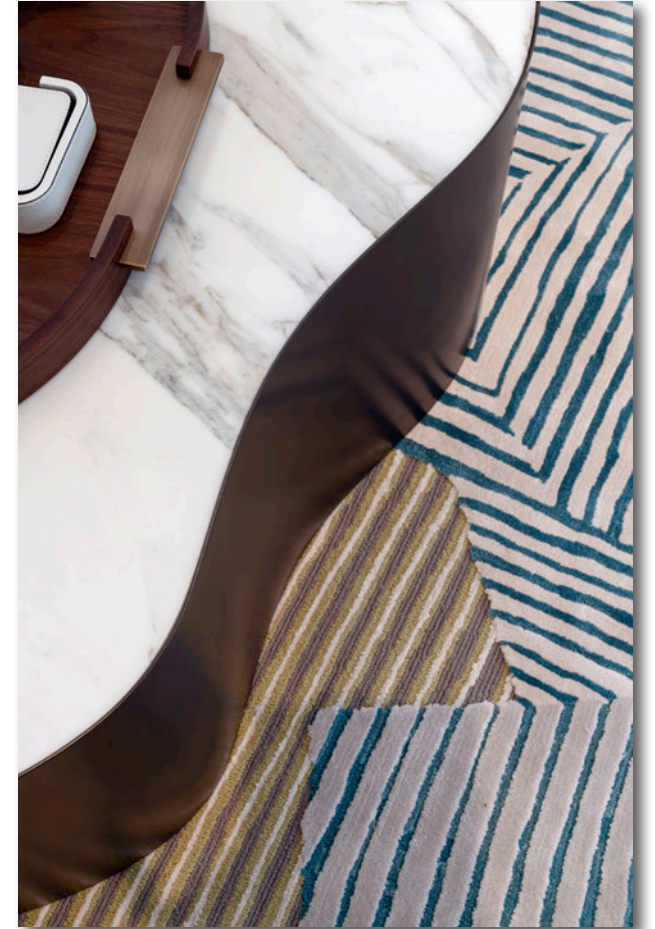
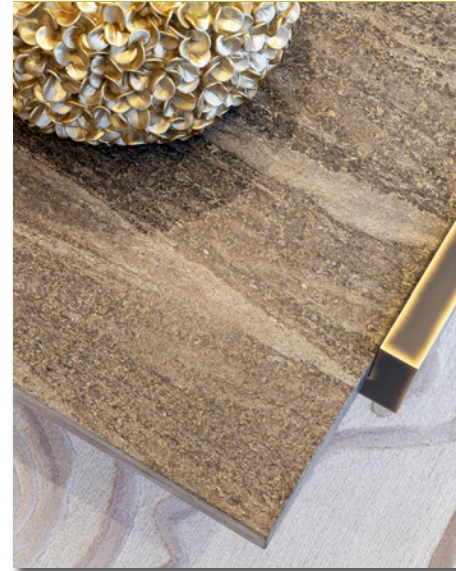


## MEET YOUR SOLEMATE

Delivered in May 2025, the 55-metre *Solemates* is the sixth chapter in a distinguished lineage, each bearing the name with a reputation for excellence. This latest creation is the most remarkable yet—conceived by a cultivated owner and realized by a world-class team of designers and shipbuilders. Every detail reflects precision engineering and contemporary elegance, seamlessly blending quality with lifestyle. Bold yet refined, *Solemates* is crafted for those who value family, fun, and effortless relaxation at sea.

## INTERIOR

Step inside *Solemates* and experience interiors defined by light, space, and refined design. In collaboration with Luca Dini, soaring atrium spaces draw the eye upward, while open-plan living areas flow seamlessly from salon to dining, creating an effortless rhythm throughout. Private suites and lounges offer serene retreats, where natural light and panoramic views shape a calming environment. Every surface, finish, and material has been selected to balance elegance with comfort, producing an interior that is as inviting as it is striking.





## MAIN SALON

A light-filled haven, this space blends curated furnishings with refined comfort as the yacht's central gathering place.





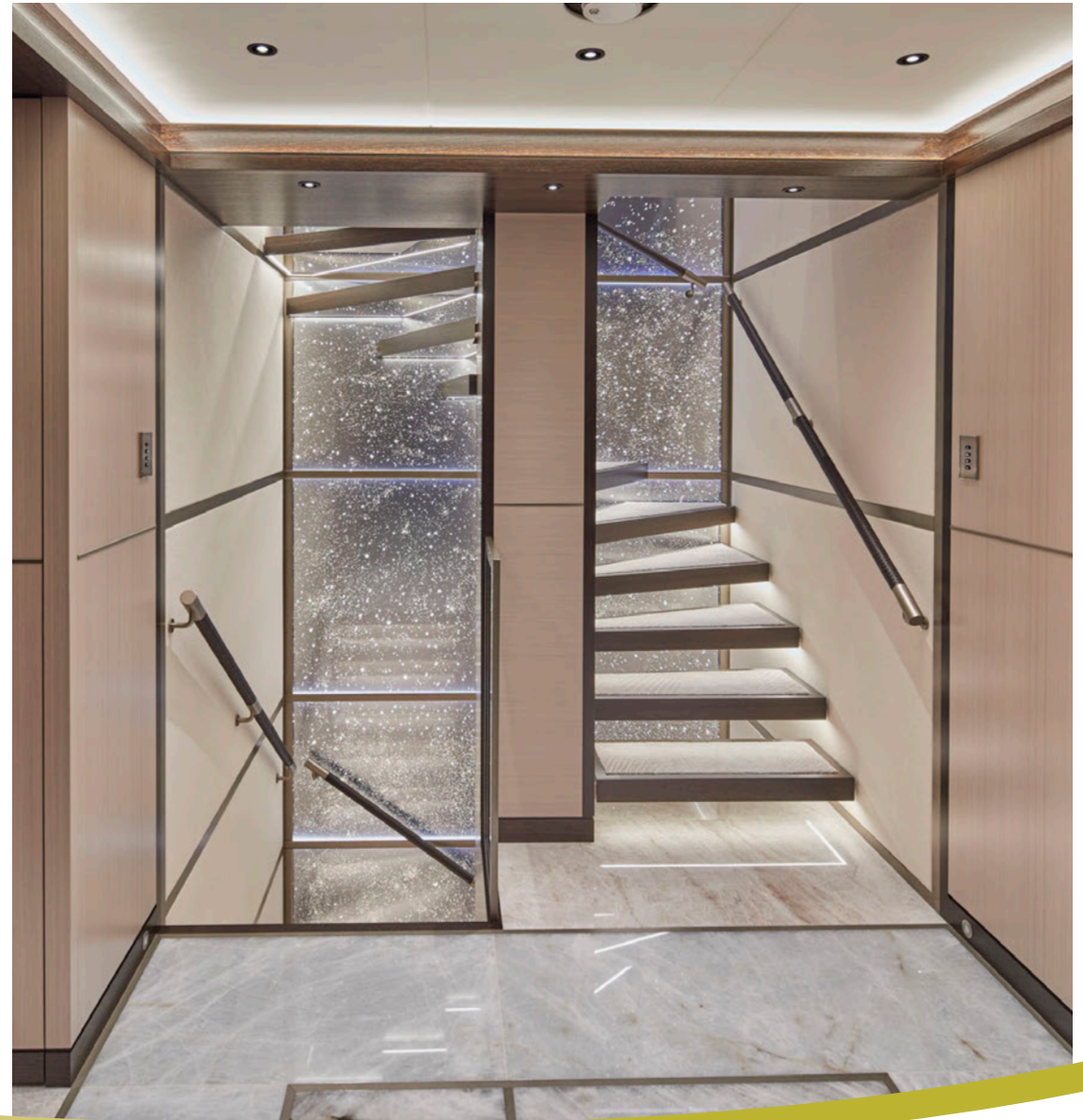
## MAIN DINING SALON

An elegant setting where fine cuisine is enjoyed against a forever-moving backdrop of panoramic views.



## MAIN DECK GUEST FOYER

A welcoming entryway that sets the tone with contemporary style and understated quality.



## MASTER CABIN

From the stillness of the suite to the openness of the French balcony—the sea is always within reach.





## MASTER CABIN & ENSUITE

This full-beam retreat offers panoramic views, generous space, and a serene setting for rest and rejuvenation.





## MASTER HEAD

A spa-inspired space with refined finishes and grand dimensions.

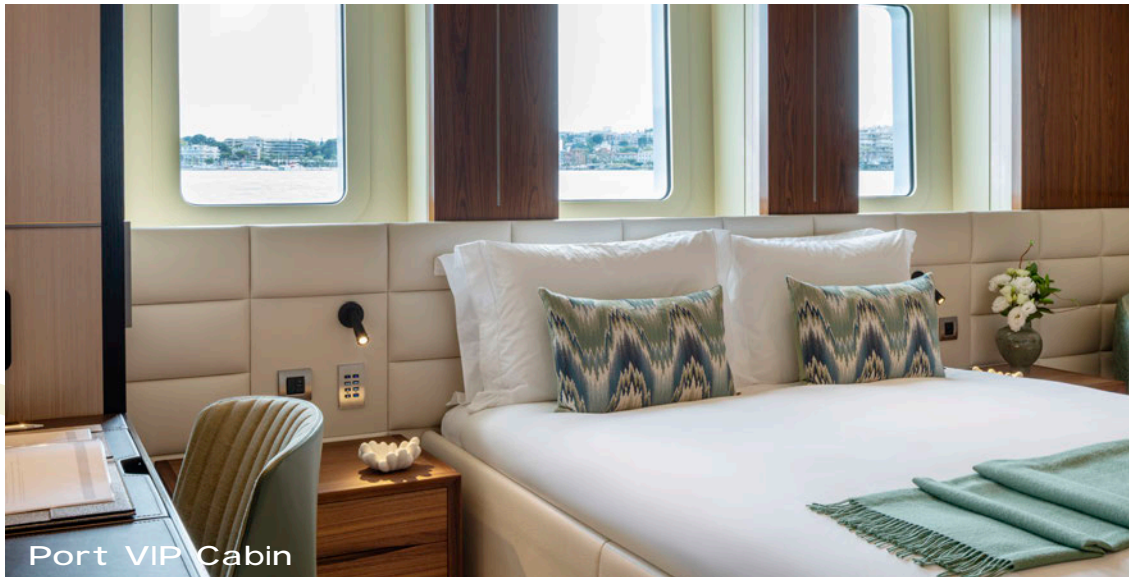


## LOWER GUEST CABINS

Space for solitude, crafted with care.



Starboard VIP Cabin



Port VIP Cabin



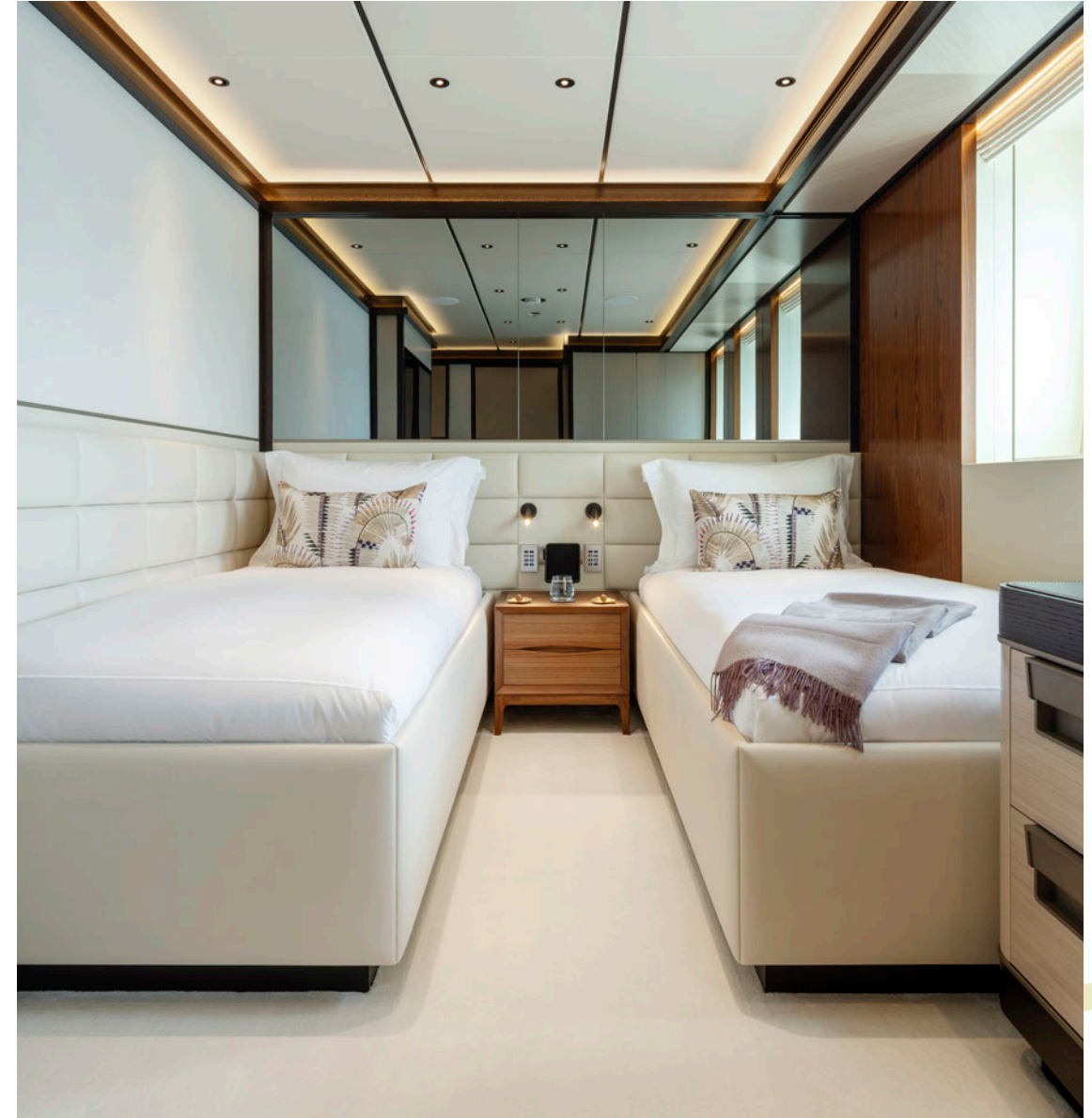
## VIP CABINS

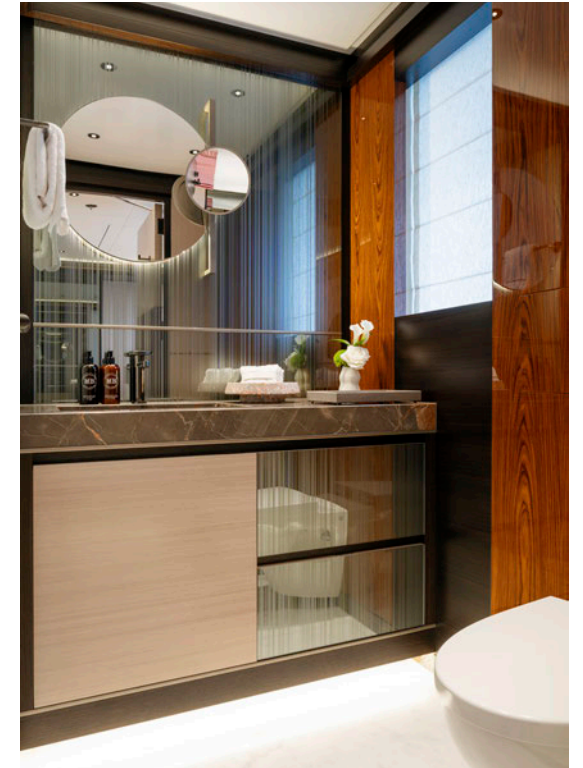
Comfort in every step, with details thoughtfully designed and cared for.



## LOWER DECK TWIN CABINS

With this design in mind, even sharing a cabin can still feel like it's made just for you.





## BRIDGE DECK VIP CABIN

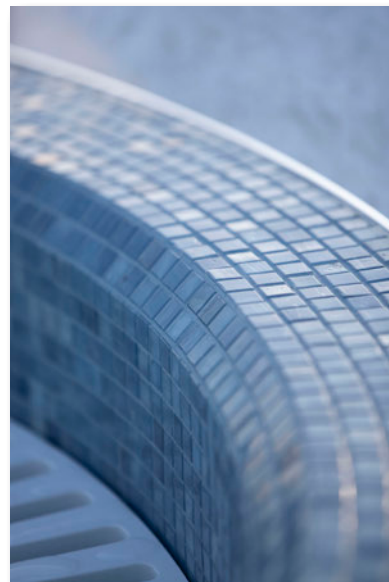
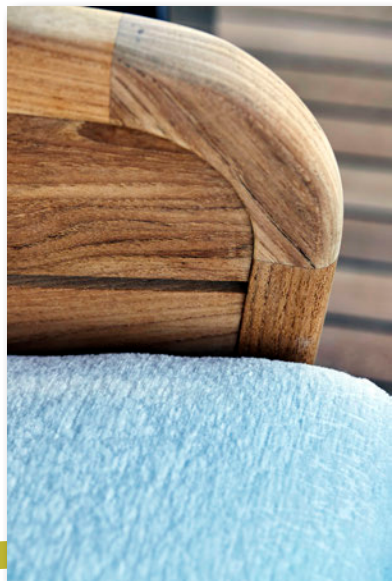
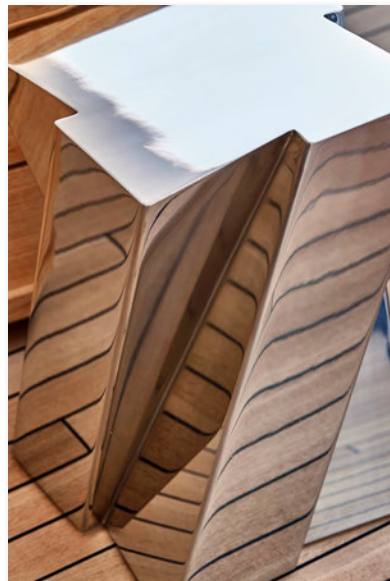
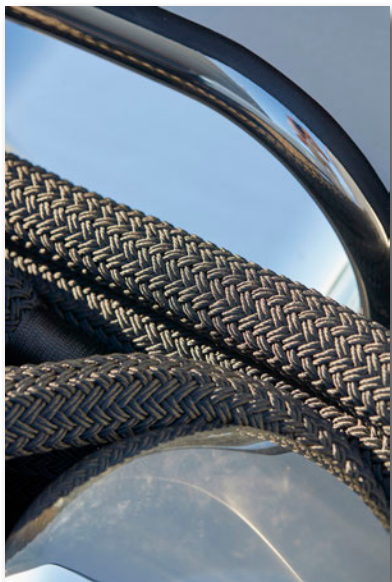
From the elevated design and views that will inspire exploration from your head to your *Sole*.



## BRIDGE DECK SALON

Enjoy refined moments of leisure with curated entertainment and games, designed for shared enjoyment with family and friends.





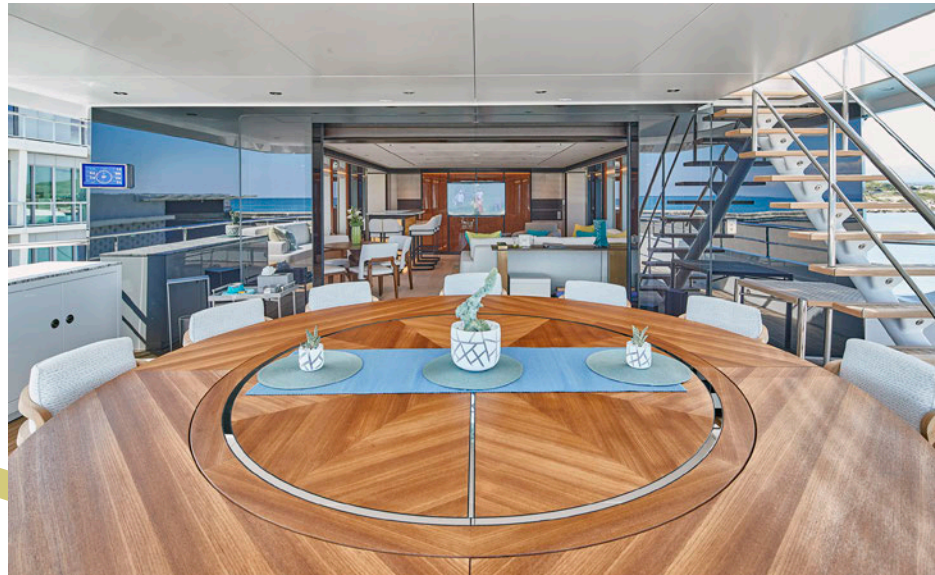
## EXTERIOR

*Solemates* commands attention with bold Omega Architects lines, accented by a vibrant palette of lime green, teal, and aqua blue. Expansive outdoor living includes a 110-square-metre sun deck featuring a whirlpool jacuzzi, bar, and lounge areas. Generous seating flows into dual staircases leading to a fixed swim platform, offering effortless access to the beach club and gym. Enhanced stairways create intuitive movement throughout—from the forward wheelhouse deck to the bridge aft and main deck aft—where an alfresco dining area sets the stage for evenings under the stars.



## BRIDGE AFT DECK

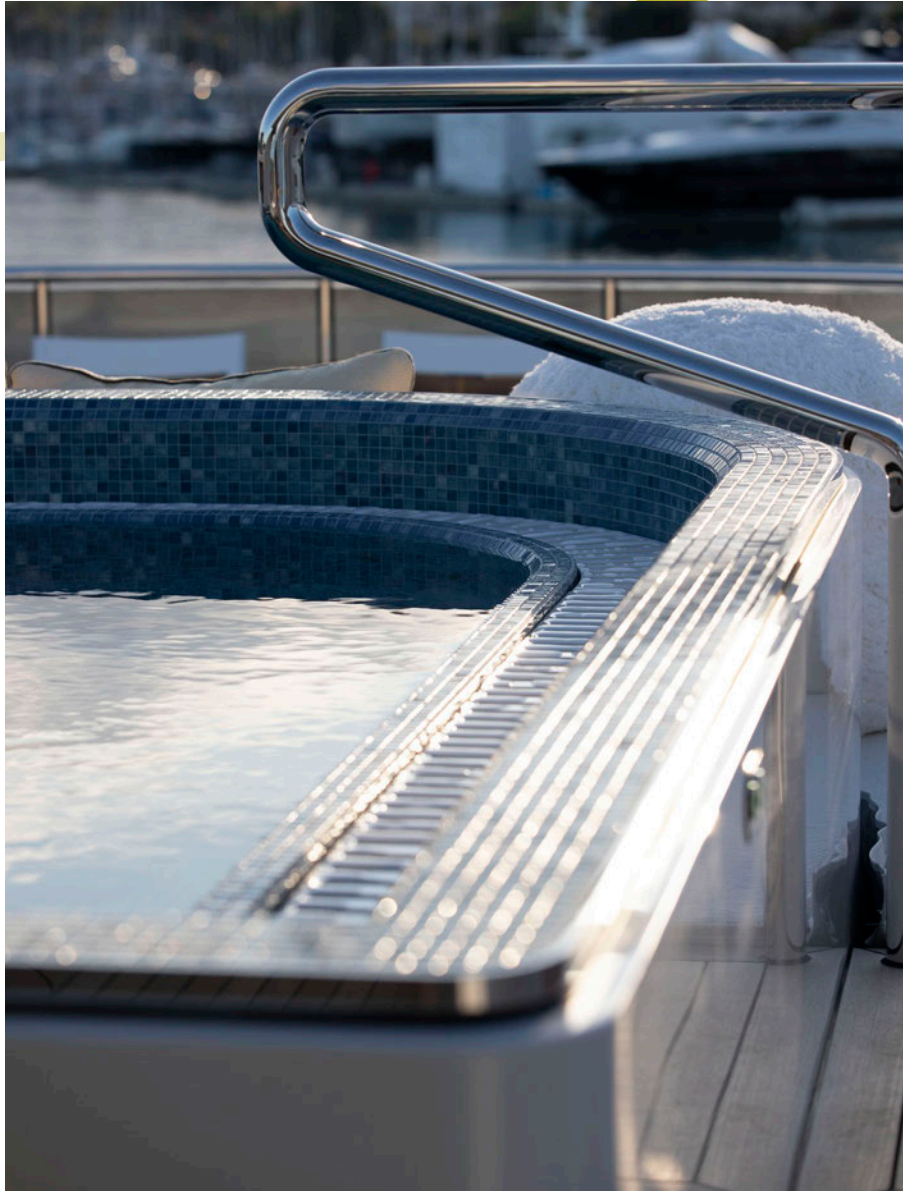
An open-air setting designed for dining, relaxation, and effortless entertainment.



## SUNDECK

Every horizon becomes  
a private view.





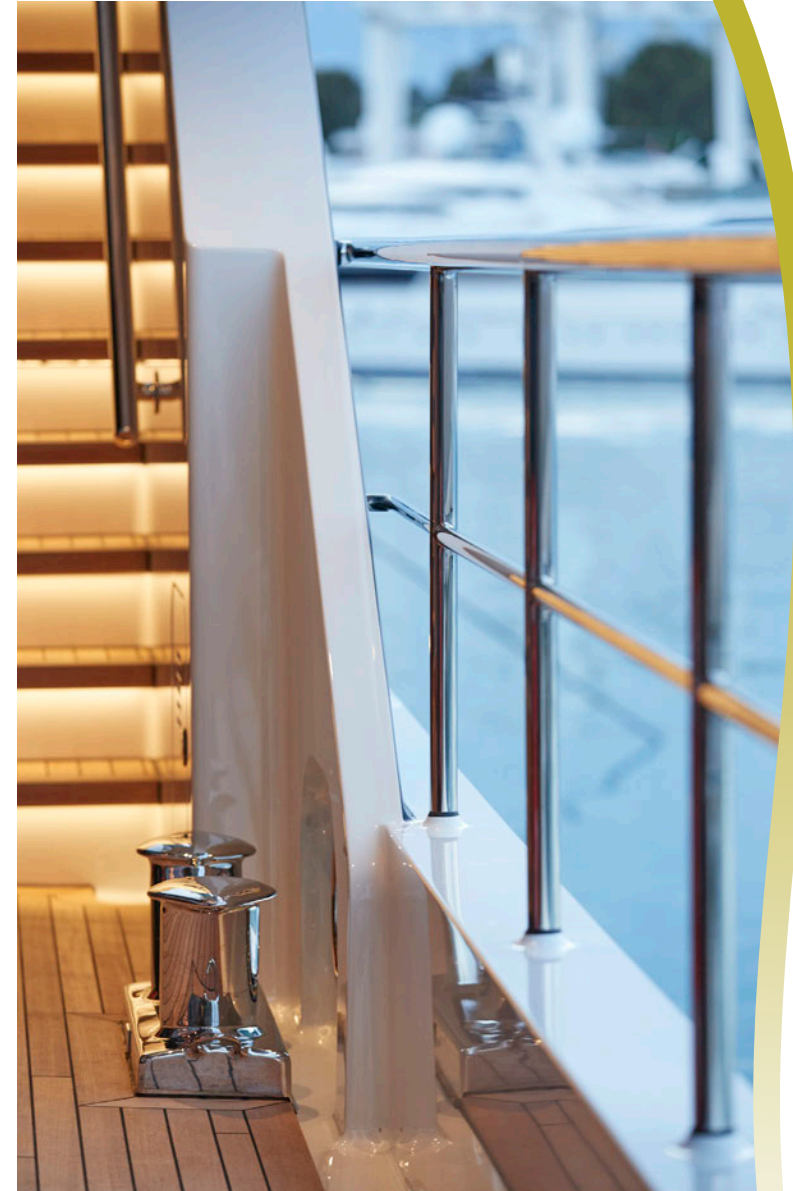
## SUNDECK

Relaxation flows from peaceful lounges to the whirlpool jacuzzi.



## FORWARD WHEELHOUSE DECK

A versatile foredeck designed for relaxation and open-air enjoyment.



## AFT DECK

An inviting space for seamless transitions between sea and salon.





## WATER TOYS

More than a yacht—Solemates is your private water sports resort.



## WATER TOYS & GYM

An exceptional selection of water toys and fitness amenities ensures endless adventure and activity.



## QUALITY

Design aboard *Solemates* is expressed through a careful balance of form, material, and intention. Interiors feature eucalyptus wall panels, dark-stained oak details, and rosewood highlights, creating warmth and depth throughout. Hand-selected stones from Italian quarries add distinction at every turn—Lumix Crystal and Naica Quartzite in the atrium, Patagonia Glace quartzite in the hallways, Azul Calcite at the skylounge bar, and Fiore di Pesco Carnico in the master bath. Complementing these natural materials are furnishings from world-renowned creators: Holly Hunt, Christian Liaigre, Maison Pouenat, Alexander Lamont, and Giorgetti. Each piece, from bespoke dining tables to sculptural lighting by John Pomp, was chosen with precision to elevate both function and beauty. Together, these elements define a contemporary interior that is sophisticated, enduring, and unmistakably *Solemates*.

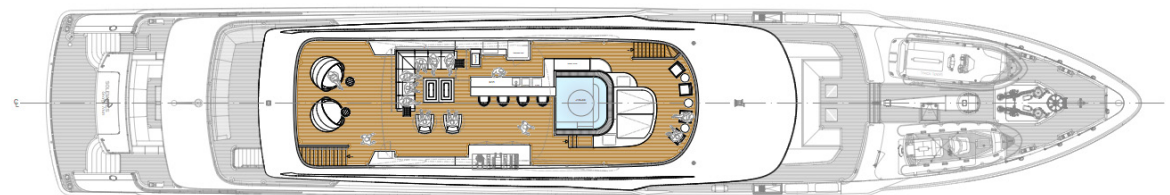


## LIFESTYLE

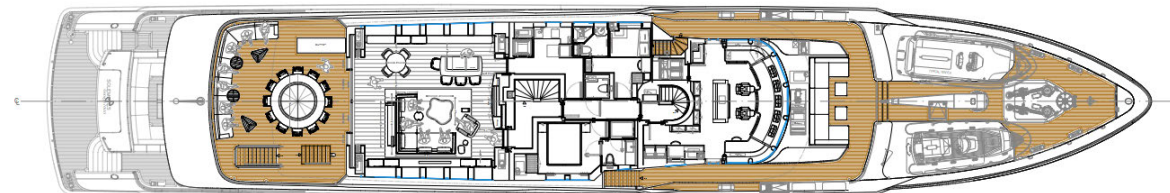
Life on board is defined by connection, celebration, and ease—made possible by a dedicated, hand-selected crew who ensure every moment feels effortless.



## DECK PLANS



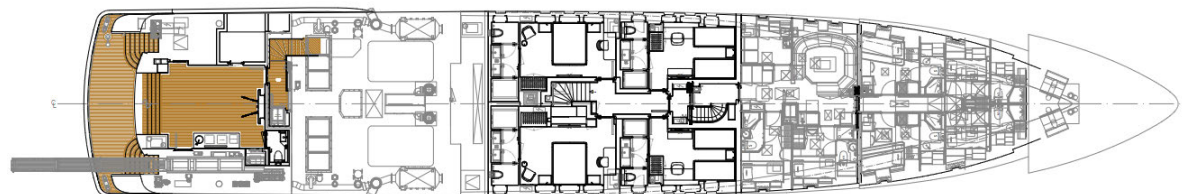
Sundeck



Wheelhouse Deck



Main Deck



Lower Deck



— SOLEMATES —

# SPECIFICATIONS

## Accommodations

**Number of guests:** 12  
**Number of cabins:** 6  
**Cabin configuration:**  
4 Double Cabins, 2 Twin Cabins  
**Bed configuration:** 1 King Bed,  
3 Queen Beds, 4 Single Beds

## Specifications

**Builder:** Heesen  
**Built:** 2025  
**Naval Architect:**  
Van Oossanen  
**Length:** 55m (180'5")  
**Beam:** 9.6m (31'6")  
**Draft:** 2.9m (9'7")  
**Hull Configuration:**  
Fast Displacement  
**Hull Material:** Steel  
**Superstructure:** Tri-deck+  
**Cruising Speed:** 13 Knots  
**Stabilizers:** At anchor and  
underway  
**Gross Tons:** 758  
**Communication:**  
Maritime Starlink

## Toys

1 x water ski set  
1 x wake surfboard  
3 x tubes (various sizes)  
4 x paddleboards  
2 x kayaks  
2 x jet skis (1 x RXP x RS-325,  
1 x RXT x RS-325)  
2 x inflatable rectangular pads  
1 x reverso sailing boat  
2 x F9S Seabobs  
2 x Flite e-foil  
1 x Jobe Sea pool  
Snorkling gear  
Fishing gear  
1 x X-Craft 7.2 m Beachlander  
Guest Tender  
1 x Ribeye 6.2 m Rescue Boat

Make *Solemates* your  
next escape—reach out  
to your preferred charter  
broker and start planning  
your journey.

#### DISCLAIMER

This material is not to be relied upon; all  
contractual rights are reserved. ©2025.